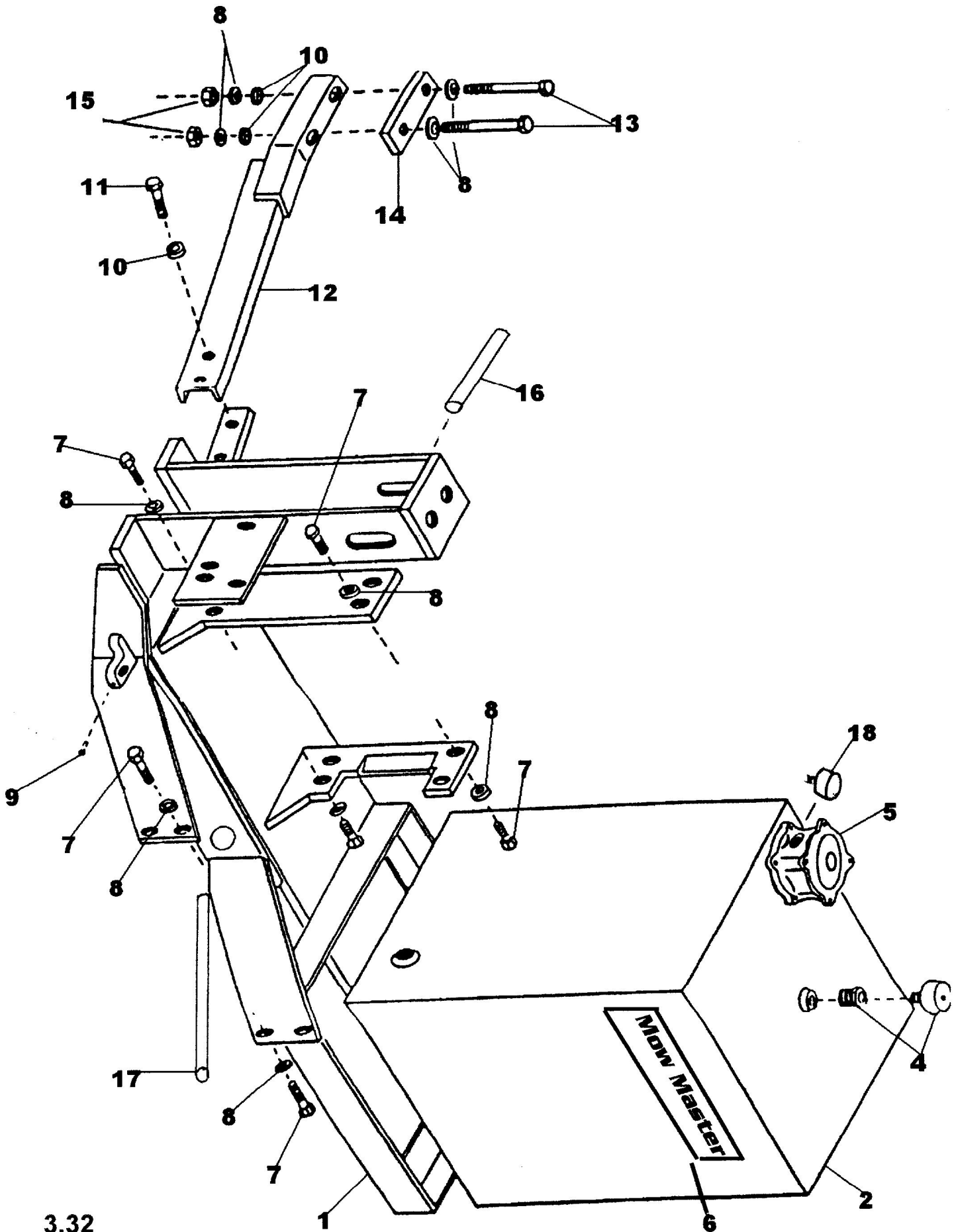


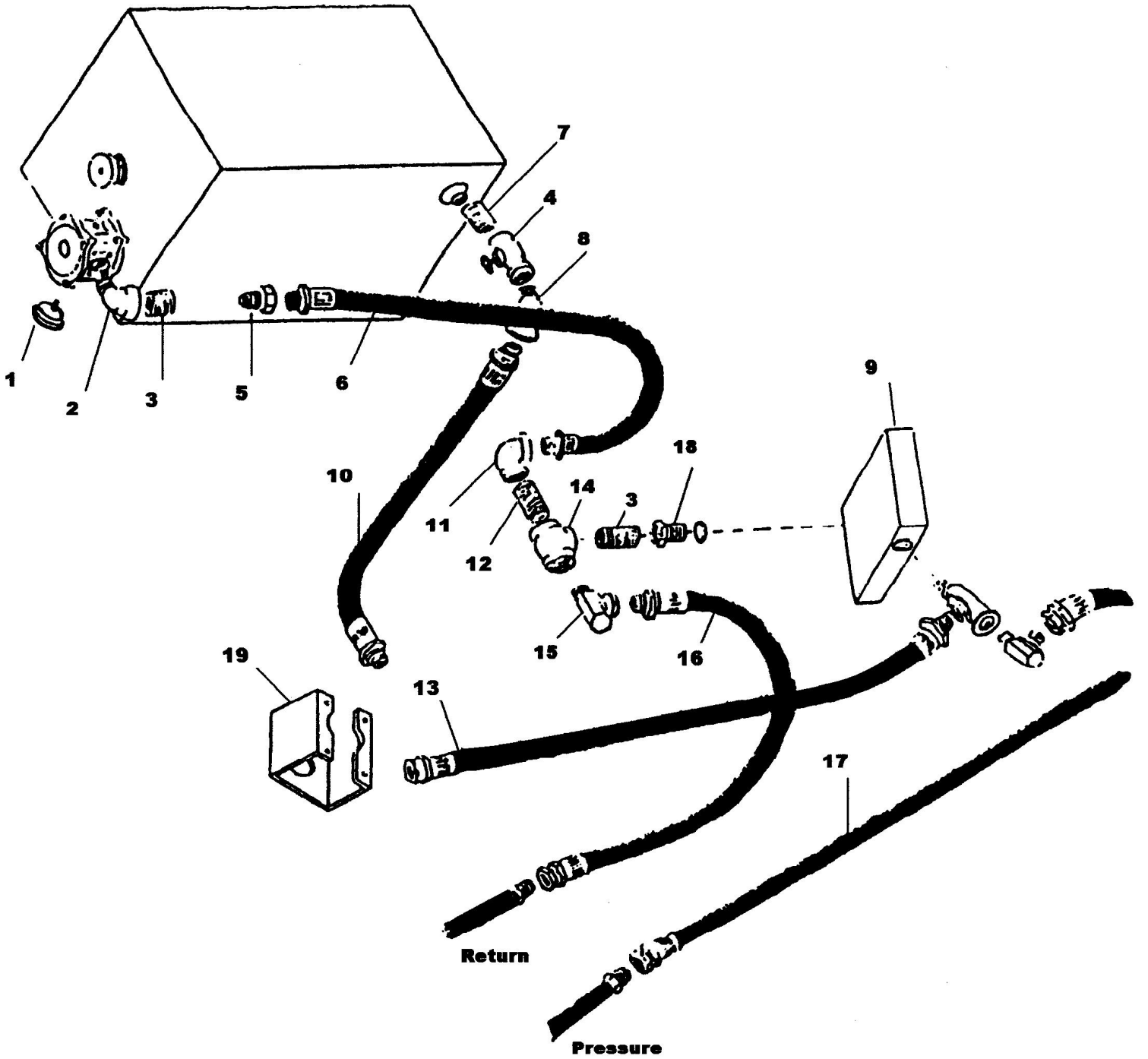
Side Mount Mower
Main Frame Assembly
Figure 1



**Side Mount Mower
Main Frame Assembly
Figure 1**

REF NO	PARTS DESCRIPTION	REQUIRED	PART #
1.	main frame assembly	1	MM001
2.	reservoir tank	1	MM002
4.	breather/filter assembly	1	MM004
5.	filter assembly (in tank)	1	MM005
6.	"Mow Master" decal	1	MM006
7.	capscrew, $\frac{3}{4}$ " x $1 \frac{3}{4}$ "	16	4884
8.	lockwasher, $\frac{3}{4}$ "	18	34LW
9.	zerk, $\frac{1}{4}$ " drive	1	80024
10.	flat washer, $\frac{3}{4}$ "	6	34FW
11.	capscrew, $\frac{1}{2}$ " x 2	2	1213x2HH
12.	axle brace	1	MM012
13.	capscrews, $\frac{3}{4}$ " x 9" NC	2	MM013
14.	axle brace plate	1	MM014
15.	hex nuts, $\frac{3}{4}$ "NC	2	34HHN
16.	lift tower pin 1" x $6 \frac{1}{4}$ "	1	MMTP1006
17.	main frame pin $1 \frac{1}{2}$ " x $16 \frac{3}{4}$ "	1	MM3001
18.	filter restriction gauge	1	MM649
	element (filter assy. MM005)	1	MM145

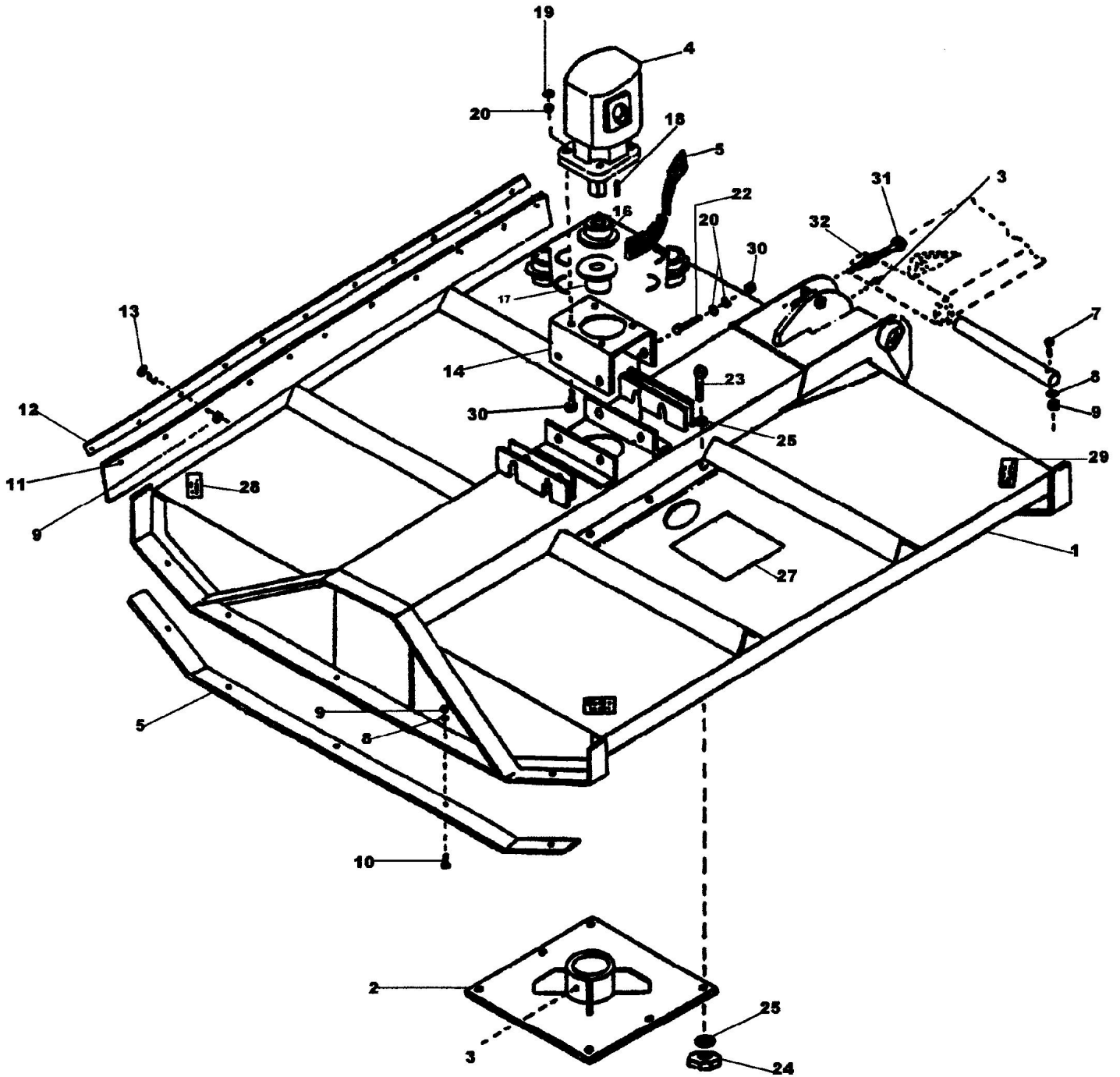
Side Mount Mower
Feed Line Assembly
Figure 2



**Side Mount Mower
Feed Line Assembly
Figure 2**

REF NO	PARTS DESCRIPTION	REQUIRED	PART #
1.	pressure gauge	1	MM649
2.	street el, 1 ¼" x 90° x HD	1	MM056
3.	close nipple 1 ¼" x HD	2	MM069
4.	1 ¼" gate valve	1	MM070
5.	swivel, 1 ¼" MP- 1 ¼" FP	1	MM071
6.	hose, 1 ¼" x 82"	1	MM24520
7.	1 ½" close nipple XHD	1	MM073
8.	street el, 1 ¼" x 45° XHD	4	MM075
9.	valve, (complete)	1	MM076
10.	hose, 1 ¼" x 100"	1	MM24520
11.	street el, 1 ¼" x 90°	4	MM056
12.	1 ¼" x 4" nipple XHD	1	MM078
13.	hose, 1 ¼" x 68"	1	MM24520
14.	tee, 1 ¼" x XHD	2	MM080
15.	1 ¼" MP x 90° swivel	2	MM081
16.	1 ¼" hose, x 53"	1	MM24520
17.	1 ¼" hose, x 53"	1	MM24520
18.	Adapter, 1 ¼" MB-1 ¼" FP	1	MM084
19.	pump mounting bracket	1	MM085

Side Mount Mower
Deck Assembly BG60 and BG72
Figure 3

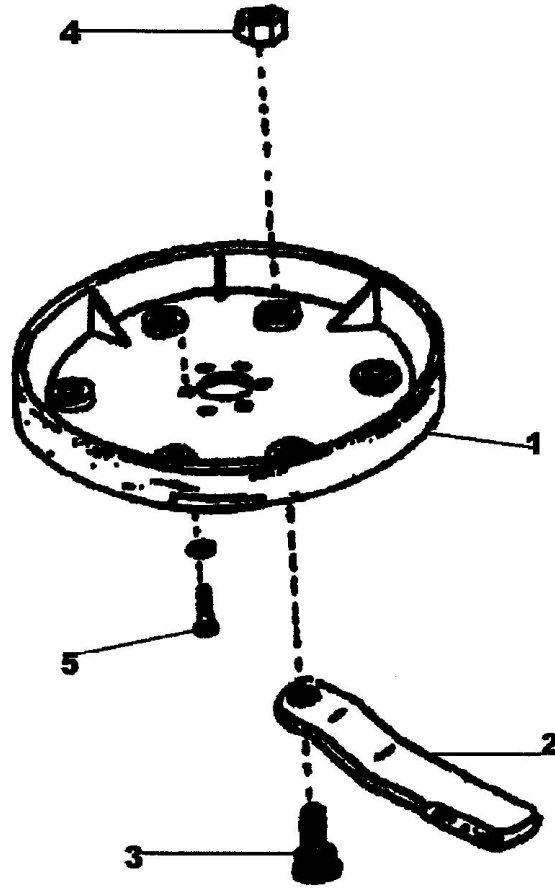


Side Mount Mower
Deck Assembly BG60 and BG72
Figure 3

REF NO	PARTS DESCRIPTION	REQUIRED	PART #
1.	deck 60"	1	MM60-R
1A.	deck 72"	1	MM72-R
2.	bearing carrier hub	1	MM063
3NS.	18" whip hose	1	715-1229
	adaptor	1	3300x2
4.	hydraulic motor	1	MM055-OR
5.	skid shoe	2	MMS146
6.	mower beam pin, 1 ½" x 15 ½"	1	MM147
7.	bolt, 3/8" x 3"	3	3816x3HH
8.	lock washer, 3/8"	2	38LW
9.	hex nut, 3/8"	14	3816HHN
10.	plow bolt	10	3816x114FHSC
11.	rear trash flap	1	MM193
12.	flap retaining strap	1	MMS149
13.	bolt, 3/8" x 1 ½"	6	3816x112HH
14.	motor mount bracket	1	MMS150
15.	coupling chain	1	MM057
16.	sprocket, motor	1	MM187
17.	sprocket, spindle	1	MM188
18.	key, motor	1	MMS151
19.	nuts, 5/8" NC	8	5811N
20.	flat washers, 5/8"	4	58FW
21.	lock washers, 5/8"	4	58LW
22.	capscrews, 5/8" x 2 ½"	4	5811x212HH
23.	bolt, 3/4" x # NF	4	3410x3HH
24.	lock washer, ¾"	4	34LW
25.	nut, ¾" NF	12	3410HHN
26.	"WARNING" decal	3	MM006A
27.	" Mow Master " decal	2	MM006
28.	"DANGER" decal	2	MM006B
29.	bolt, 5/8" x 3" NF	4	5811 x 3HH
30.	nut, 5/8" NF	8	5811N
31.	bolt, 1" x 4"	1	4927
32.	hex nuts, 1"	2	2800
33.	"SPINDLE" decal	1	MM006D
34.	"NOTICE" decal	1	MM006E
35.	"ON-OFF" decal (located inside tractor)	1	MM006F

Blade Mounting Assembly and Blade

PC-60-BR, PC-72-SR

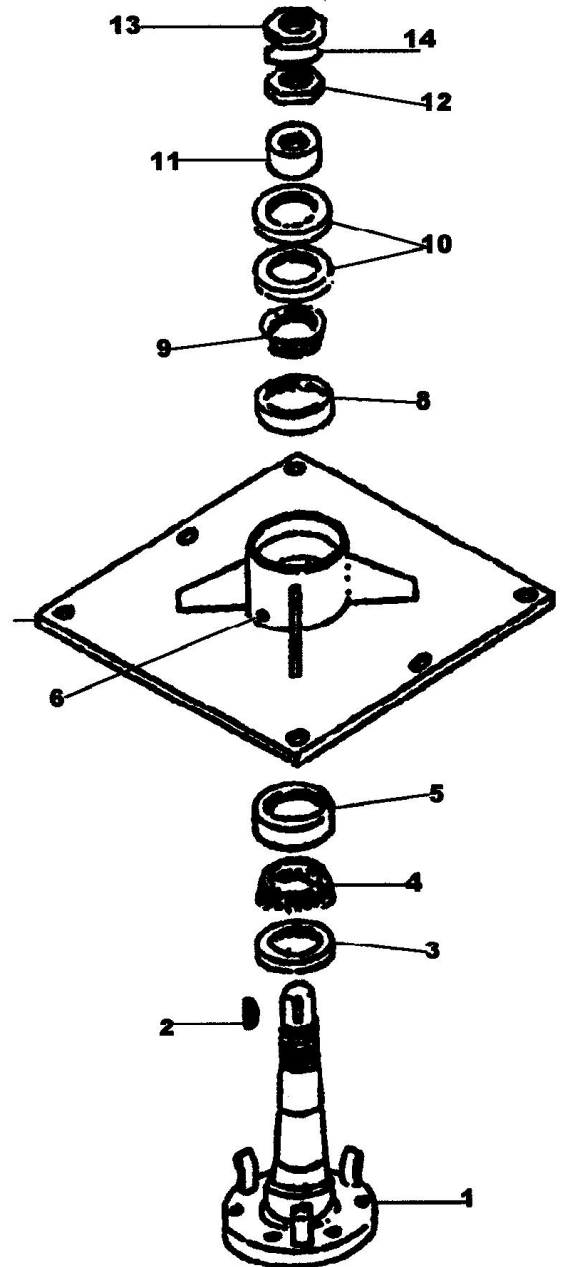


REF NO	PART DESCRIPTION	REQUIRED	PART #
1.	mounting disk	1	MMS60
	mounting disk	1	MMS72
2.	60" blade	2*	MMT2
	72" blade	2*	MMT4
3.	blade mounting bolt	2*	MMB1
4.	blade mounting nut	2*	MMN1
5.	bolt, 5/8" x 2" fine thread	6	MM2664

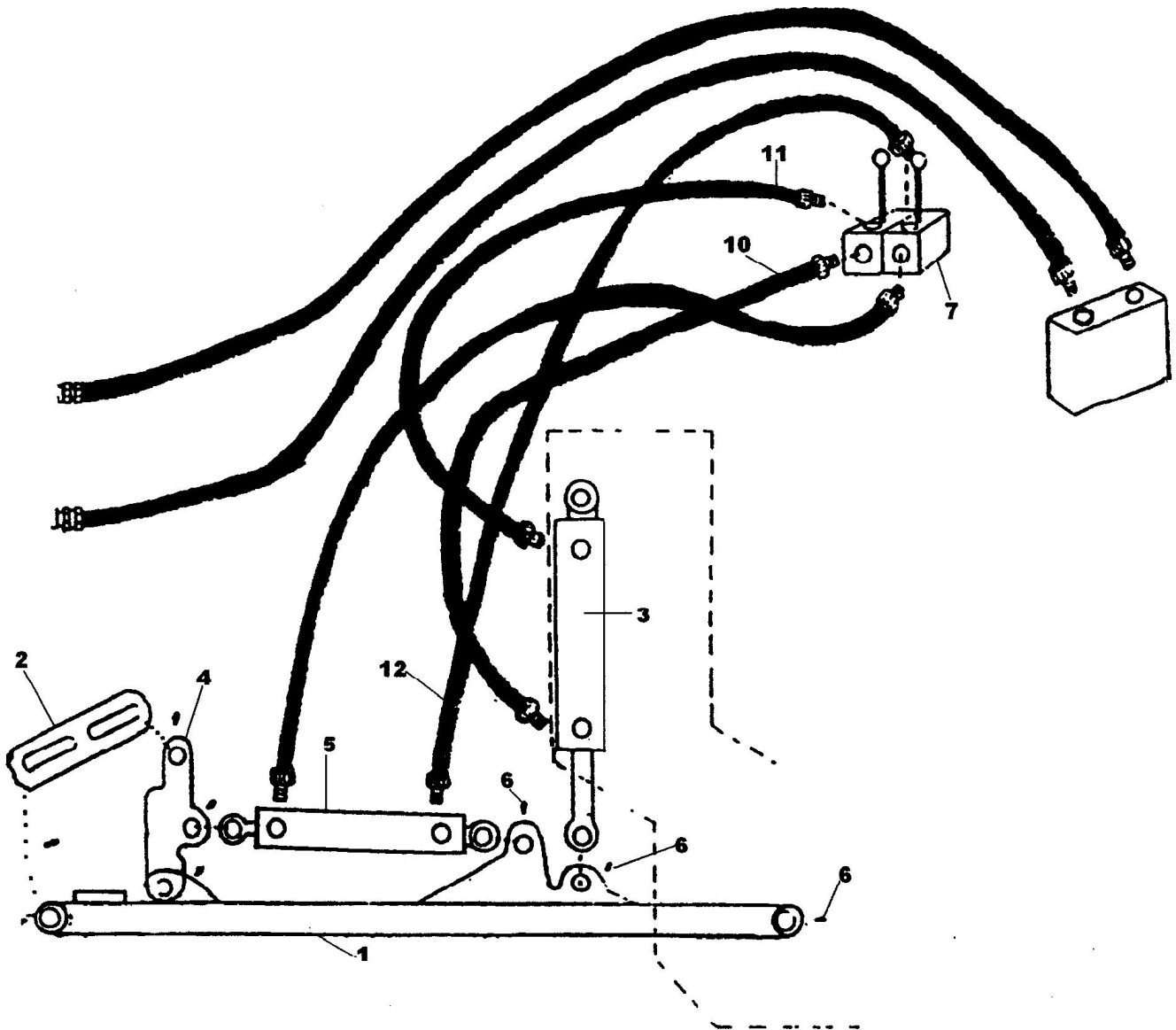
* 2, 3, 4 or 6 blades may be used.

**Side Mount Mower
Spindle Assembly
MMS940**

REF NO	PART DESCRIPTION	REQUIRED	PART#
1.	spindle	1	MM153
2.	spindle key	1	MM154
3.	seal	1	MM155
4.	bearing cone	1	MM156
5.	bearing cup	1	MM157
6NS	18" whip hose	1	715-1229
7.	bearing carrier	1	MM063
8.	bearing cup	1	MM160
9.	bearing cone	1	MM161
10.	upper ring seals	2	MM162
11.	bearing adjustment sleeve	1	MM163
12.	bearing adjustment nut	1	MM165A
13.	bearing lock nut	1	MM165
14.	locking tab washer	1	W09
15.	roll pin - 3/4"	4	MM152



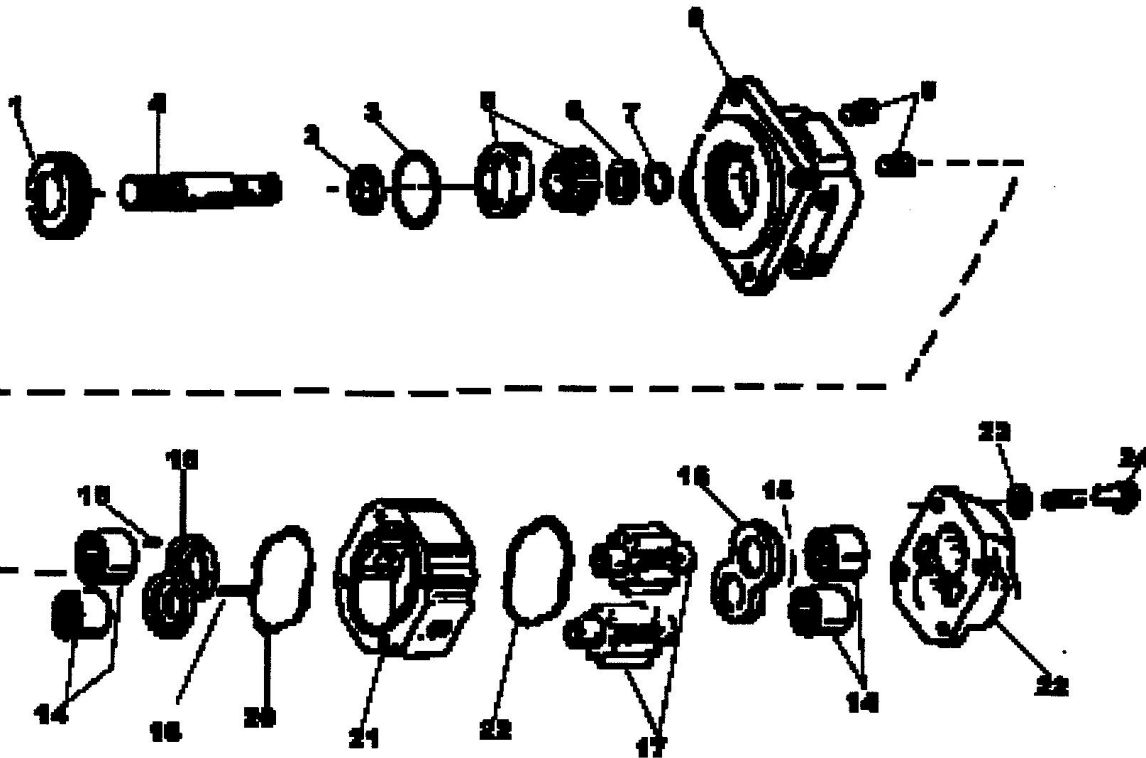
Side Mount Mower
Beam and Link Assembly
Figure 4



**Side Mount Mower
Beam and Link Assembly
Figure 4**

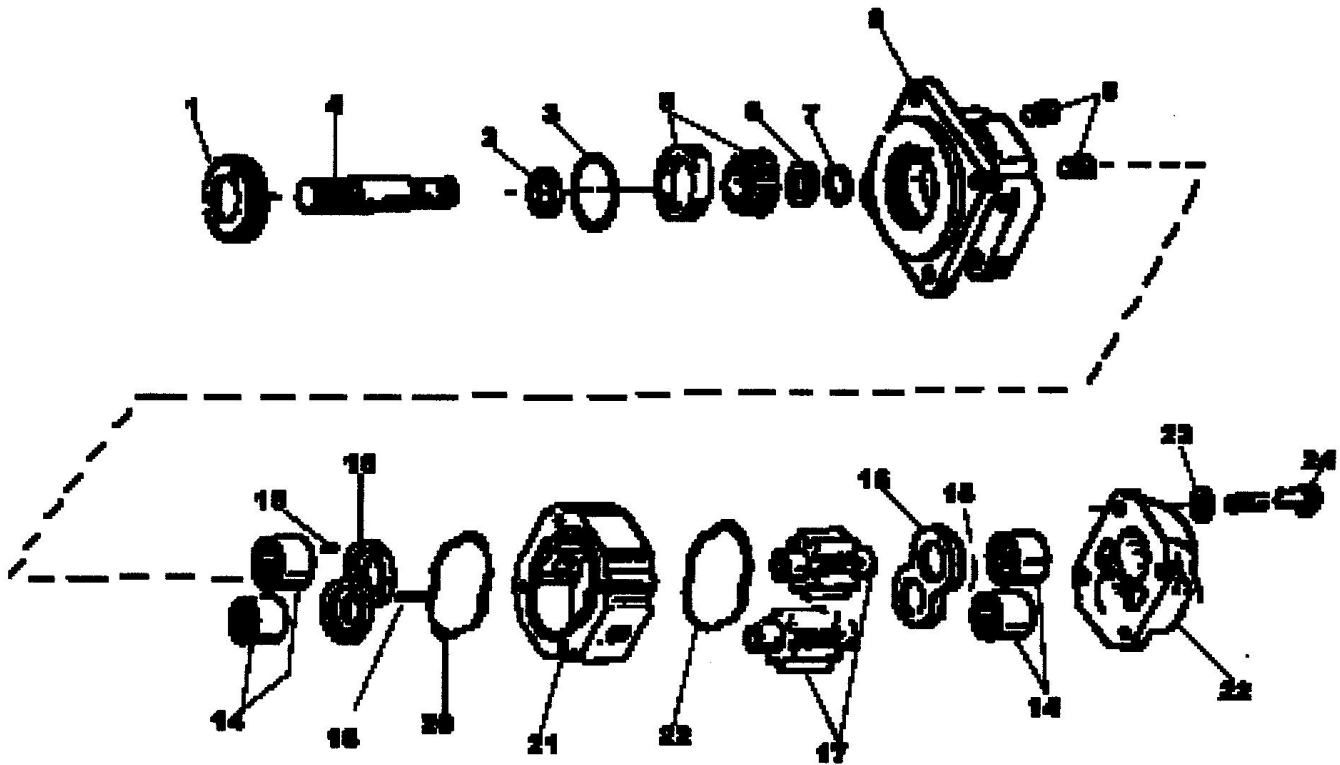
REF NO	PART DESCRIPTION	REQUIRED	PART #
1.	draft beam	1	MMS125
2.	link, deck	2	MMS126
3.	cylinder, 3" x 8"	1	MM33008
4.	link, arm	1	MMS127
5.	cylinder, 4" x 10"	1	MM34010
6.	grease zerks	8	80002
7.	two spool valve	1	MMS108
8.	hose, 3/8"	1	MM24506
9.	hose, 3/8"	1	MM24506
10.	hose, 3/8"	1	MM24506
11.	hose, 3/8"	1	MM24506
12.	hose, 1 1/4"	2	MM24520

Front Mount Pump MM208-OR STD



REF NO	PARTS DESCRIPTION	REQUIRED	PART #
1.	retainer	1	MM169
2.	seal	1	MM208-2
3.	o ring	1	MM208-3
4.	drive shaft-splined	1	MM208-4
5.	tapered bearings	2	MM208-5
6.	spacer	1	MM208-6
7.	retaining ring	1	MM208-7
8.	shaft end cover	1	MM175
9.	check assembly/plug	2	MM176
10.	connecting shaft	1	MM177
11.	spacer	1	MM178
12.	roll pin	1	MM179
13.	bushing	1	MM180
14.	roller bearings	2	MM181
15.	pocket seals (sets)	2	MM182
16.	thrust plates	2	MM183
17.	matched gears (set)	1	MM208-17
18.	stud	1	MM208-18
19.	lock nut	1	MM208-19
20.	gasket seals	2	MM187A
21.	gear housing	1	MM208-21
22.	port end cover	1	MM189A
23.	lock nut	1	MM208-23
24.	capscrew	1	MM208-24
*	pump seal kit	1	MM208SK

Motor
MM055-OR STD



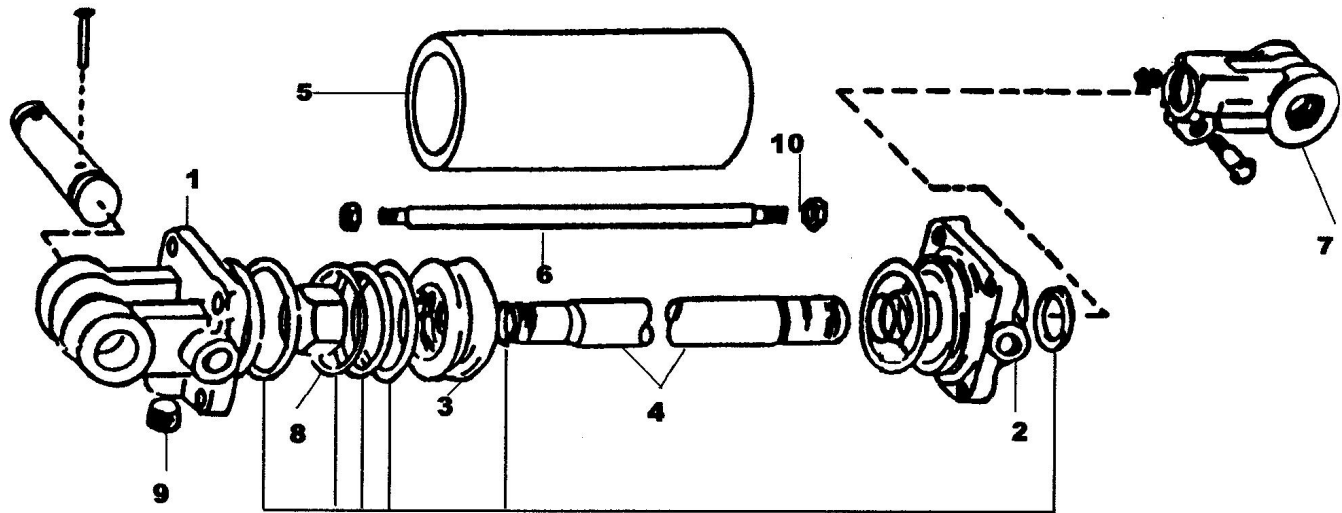
REF NO	PARTS DESCRIPTION	REQUIRED	PART #
1.	retainer	1	MM169
2.	seal	1	MM055-2
3.	o ring	1	MM055-3
4.	drive shaft-w keyway	1	MM055-5
5.	tapered bearings	2	MM055-4
6.	spacer	1	MM208-6
7.	retaining ring	1	MM208-7
8.	shaft end cover	1	MM175
9.	check assembly/plug	2	MM176
10.	connecting shaft	1	MM177
11.	spacer	1	MM178
12.	roll pin	1	MM179
13.	bushing	1	MM180
14.	roller bearings	2	MM181
15.	pocket seals (sets)	2	MM182
16.	thrust plates	2	MM183
17.	matched gears (set)	1	MM055-17
18.	stud	1	MM055-18
19.	lock nut	1	MM186
20.	gasket seals	2	MM187A
21.	gear housing	1	MM055-21
22.	port end cover	1	MM189A
23.	lock nut	1	MM055-23
24.	capscrew	1	MM055-24
*	motor seal kit	1	MM055SK

Side Mount Rotary Mower

3 x 8 Cylinder

MM33008

Pin Kit



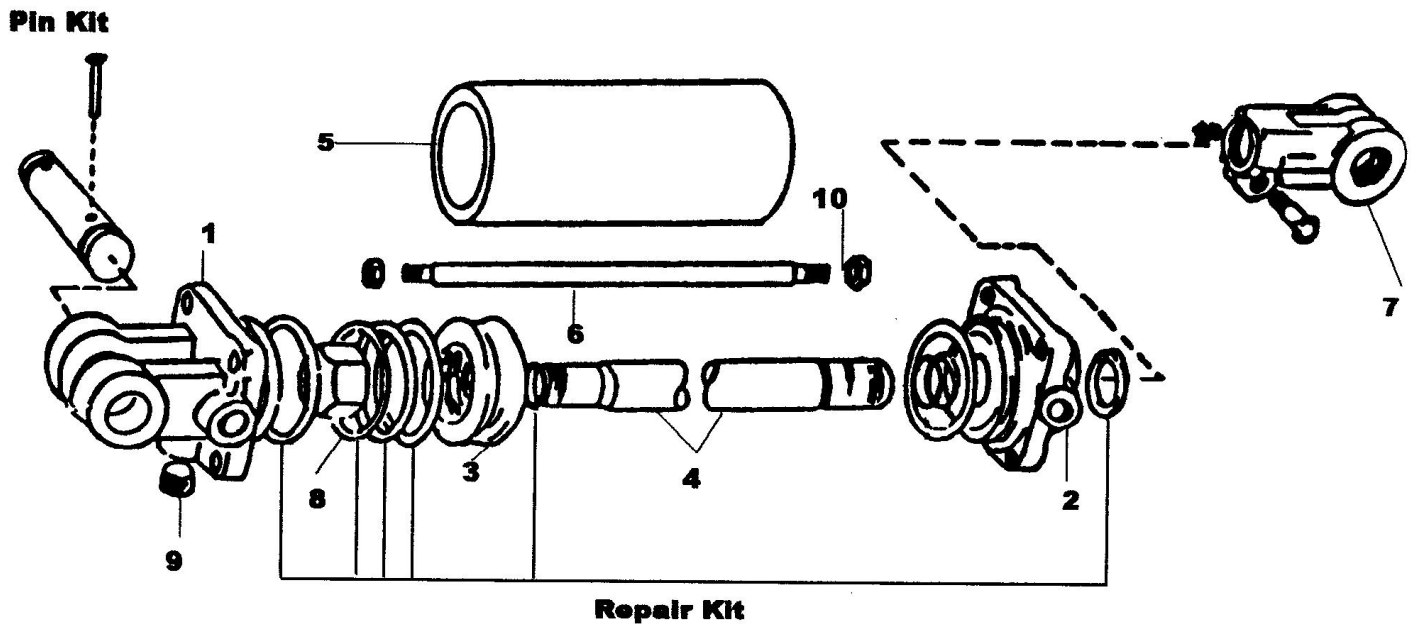
Repair Kit

REF NO	PART DESCRIPTION	REQUIRED	PART #
1.	cylinder butt	1	MM33008-1
2.	rod gland	1	MM33008-2
3.	piston	1	MM33008-3
4.	rod	1	MM33008-4
5.	tube	1	MM33008-5
6.	tie rods	4	MM33008-6
7.	rod clevis	1	MM33008-7
8.	nut/piston	1	MM33008-8
9.	plug	1	MM33008-9
10.	tie rod nuts	4	MM33008-10
11.	seal kit		MM33000SK

Side Mount Rotary Mower

4 x 10 Cylinder

MM34010



REF NO	PART DESCRIPTION	REQUIRED	PART #
1.	cylinder butt	1	MM34010-1
2.	rod gland	1	MM34010-2
3.	piston	1	MM34010-3
4.	rod	1	MM34010-4
5.	tube	1	MM34010-5
6.	tie rods	4	MM34010-6
7.	rod clevis	1	MM34010-7
8.	nut/piston	1	MM34010-8
9.	plug	1	MM34010-9
10.	tie rod nuts	4	MM34010-10
11.	seal kit		MM34000SK